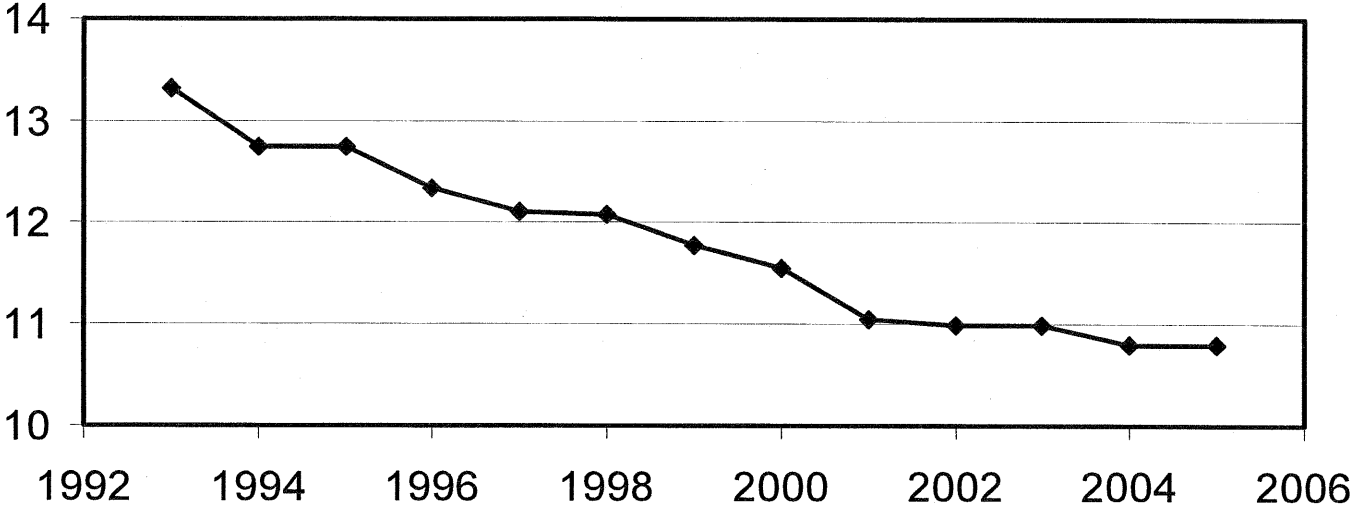


City of Auburn Hills Tax Rate Chart



Note: These rates reflect ONLY the rates charged by the City of Auburn Hills. Additional millages are charged each year by the School Districts and Oakland County.

Oakland County Community Tax Rates

The following are local millage rates for communities within Oakland County. These are the rates that the local municipalities have levied and do not include the school district millage rates. The rates listed below are for the 2005 Tax collection.

Cities

Bloomfield Hills	8.30000
Rochester Hills	9.66810
Lake Angelus	9.95710
Troy	10.24000
Novi	10.54160
Auburn Hills	10.79020
Wixom	11.63630
Royal Oak	11.78160
Berkley	12.62500
Keego Harbor	13.69450
Rochester	13.73740
Birmingham	15.07190
Southfield	16.26400
Walled Lake	17.01130
Madison Heights	17.29700
Pleasant Ridge	19.06250
Lathrup Village	19.33240
Pontiac	19.80110

Townships

Commerce	4.55600
Springfield	5.00370
White Lake	5.13800
Orion	5.45190
Oakland	6.02830
Highland	6.72590
Milford	7.11960
Independence	7.14890
Addison	7.26690
Southfield/Bing Farm	7.35000
Southfield/Franklin	7.35000
West Bloomfield	9.06190
Oxford	10.05630
Waterford	10.29100
Southfield/Bev Hills	12.37560

* Results from survey of local communities in January 2006